

ALEXANDRIA PARK COMMUNITY SCHOOL

Park Road Alexandria 2015

phone +61 2 9698 1967

fax +61 2 9315 5007

email alexparkcs-c.school@det.nsw.edu.au

web www.alexparkcs-c.schools.nsw.edu.au



21st October 2020,

Dear Parents and Carers,

Welcome to Term Four. This note contains information for the students and families of 3/4H.

Class Organisation from left to right,

Mr Cameron Whipp *Music*, Ms Molly Moore 3/4M (Assistant Principal Curriculum), Ms Jessie Attwood *Library*, Mr Jacob Ansell 3/4A, Ms Cristina Santone 3/4S, Mr Bradley Hansen 3/4H (Assistant Principal Wellbeing)



Class timetable

Class timetable

	Monday	Tuesday	Wednesday	Thursday	Friday
9:00-10:00	English	English	Library <i>Ms Attwood</i>	English	3-6 Sport
10:00 – 11:00	English	Maths	English	Music <i>Mr Whipp</i>	
11.00 – 11.10	Eating Time				
11.10 – 11.50	Lunch				
11.50-12.50	Maths	Chance <i>Ms Lim</i>	Maths	Maths	Science Technology Engineering Arts Mathematics
12.50 – 1.50	History	Matilda	Integrated Learning	PBL	
1.50 – 2.15	Afternoon tea				
2.15- 3.10	Mindfulness <i>Ms Ozdirik</i>	Child Protection	SRE	Visual Arts	Assembly <i>(even weeks)</i>

Positive Behaviour for Learning

Positive Behaviour for Learning (PBL) is Alex Park's whole-school behaviour support program, which provides students, staff and families with clear expectations for behaviour and common, positive language for discussing behaviour. The three values of PBL at Alex Park are:



These values are reinforced through direct teaching, the language used by all staff throughout the school, and visual posters displayed throughout the school. We are continuing to recognise positive behaviour, effort and achievement through our Deadlies achievement system and recognition at assemblies, and to manage behaviour through the school discipline system, which includes behaviour contracts.

APCS is an Allergy Aware School

As you may be aware, there are students in our school who have an allergy to certain types of food. In order to help ensure that all our students are safe, we ask you to please not send your child with foods, which contain common allergens such as nuts, eggs, or fish. This includes food items such as peanut butter and Nutella.

Playground

In the odd weeks, Stage 2 and 3 will be playing on the Oraywa and they will need to order their lunch in the morning as they will not be able to access the canteen at lunch times. In even weeks Stage 2 and 3 students will play in the Burra Gorang.

Curriculum

This table provides an overview of key topic areas for the term.

Key Learning Area	Topics/ Strands	Content Covered
English	Writing	Students will share in the serial reading of a class novel and complete an in-depth study of plot, characterisation and setting. Students will focus on developing improved inferential comprehension in guided reading groups.
	Reading Comprehension	Students will work on the "Sentence a Day" program and they will learn to plan, write and edit informative texts.
	Public Speaking	

		Students will prepare a speech throughout the Term to deliver based on multiculturalism in Australia. Students will choose from the topics provided.
Maths	<p>Working mathematically</p> <p>Whole number</p> <p>Fractions and Decimals</p> <p>Mass</p> <p>Volume and capacity</p> <p>3D objects</p>	<p>Students will learn how to describe and represent mathematical situations in a variety of ways using mathematical terminology and some conventions.</p> <p>Students apply place value to order, read and represent numbers of up to five digits.</p> <p>Students represent, model and compare commonly used fractions and decimals.</p> <p>Students will measure, record, compare and estimate the masses of objects using kilograms and grams.</p> <p>Students will measure, record, compare and estimate volumes and capacities using litres, millilitres and cubic centimetres.</p> <p>Students will make, compare, sketch and name three-dimensional objects, and describe their features.</p>
History	First Contacts	Students will learn about Aboriginal and Torres Strait Islander Peoples long connection to country and what life was like for them prior to European contact. Students will study the early years of European settlement, identifying and explaining the impact on Aboriginal people.
Science and Technology	Physical forces	Students will participate in STEAM activities. They will learn that objects move as a result of a push or pull force. Students will understand that forces can be exerted by one object on another through direct contact or from a distance.
Arts	Visual Arts	Visual Arts will be embedded in STEAM activities and students will design and create a variety of projects. .
	Music	Students will study the guitar and participate in a range of singing, performing, listening and movement tasks. Students are introduced to common chords and riffs from famous music of the last 50 years, gaining the ability to perform a selection of popular music.

PDHPE	Healthy living	Students will apply knowledge, understanding and skills to take action to enhance their own and others health, safety, wellbeing and participation in physical activity.
	Games and sports.	Students will participate in a range of activities to improve physical fitness. They will learn how to run a fitness lesson.

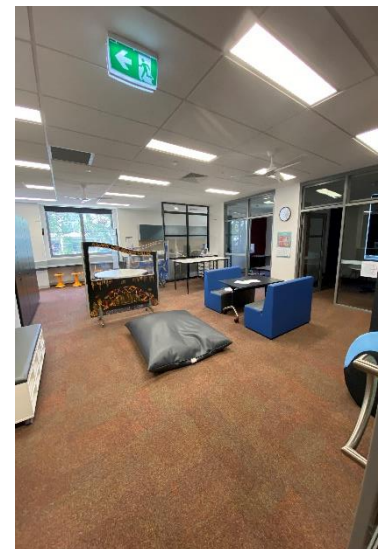
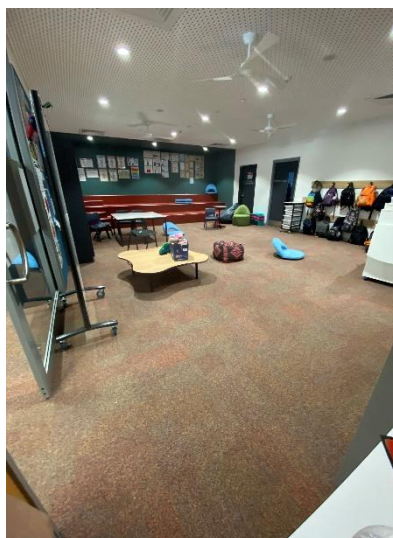
Administration

Please ensure that a note is sent to the class teacher explaining all absences. If your child is absent due to illness please provide a medical certificate where possible.

Payments of fees and for excursions can now be made online through the school website via the following url: <https://quickweb.westpac.com.au/OnlinePaymentServlet>. Alternatively, you can pay at the office. Permission notes must be returned to class teachers for students to attend excursions. We cannot accept verbal permission over the phone.

Classroom Learning Hub

This term, 3/4H will be sharing a classroom hub with 3/4S. A classroom hub consists of four spaces; Presentation, Informal Learning, Collaborative Learning and a Practical Activities Area. At first our class will be establishing where their Homebase classroom is, which is the Presentation and Informal Learning spaces. Throughout the term, 3/4H and 3/4S will be taking advantage of the space to integrate a future focussed co-teach approach to delivering lessons, such as Reading Groups, STEAM, PBL Circles and Numeracy Groups.



Key Dates

- 20th October- Book Week dress up day and fundraiser
- 9th-13th November- NAIDOC week
- 13th November-NAIDOC assembly

Class Supplies

- Lead pencils
- Tissues
- Paper towel
- Hand soap
- Whiteboard markers

Kind regards,

Stage 2 Team

Mr Bradley Hansen (Assistant Principal-Wellbeing), Ms Molly Moore (Assistant Principal-Curriculum), Ms Cristina Santone, Mr Jacob Ansell