

ALEXANDRIA PARK COMMUNITY SCHOOL

Park Road Alexandria 2015
phone +61 2 9698 1967
email alexparkcs-school@det.nsw.edu.au
web www.alexparkcs-c.schools.nsw.edu.au



Monday 17th August 2020

Dear Parents and Carers,

In response to current NSW Health and Department of Education advice to best minimise the risks posed by COVID-19 to our school community,

1. Parents/Carers and other non-essential visitors are not allowed on the school site. Please see updated after school pick procedures attached.
2. Parents and carers are reminded **NOT** to send children to school if they are unwell, even if they have the mildest flu-like symptoms. Schools will make arrangements for students who present as unwell or have flu like symptoms to be sent home.
3. NSW Health have requested that schools encourage anyone who is unwell or has even mild flu-like symptoms, to arrange to be tested through their local medical practitioner or one of the [COVID-19 clinics](#).
4. Students with flu like symptoms will need to provide a copy of a negative COVID-19 test result before being permitted to return to school.

Thank you in advance for assisting us with these new procedures
Please don't hesitate to contact the school with any questions or concerns

Diane Fetherston

Principal

Alexandria Park Community School K-6 pick-up procedures

As of Tuesday 18th August 2020 APCS will be implementing changes to the end of the school day for K – 12 to strengthen physical distancing protocols.

Until further notice **Parents/Carers are to remain outside of the school grounds at all times including during drop-off and pick up.**

We ask for your assistance and patience as we transition to our new procedures, reminding everyone that the changes are to keep all of us as Covid safe as possible.

We will continue with the two pick up times of 2.45pm for K-2 and 3.00pm for 3-6

Kindergarten students will be picked up from **Gate Three at 2.45pm** (the main K-6 gate on the corner of Park Rd and Buckland St). Parents will be asked to queue in a social distanced way (at least 1.5m apart) outside the gate and when they reach the front of the queue at the school gate their child will be called by the supervising teacher and meet them at the gate.

Stage One (Years One and Two) students will be picked up from **Gate Two at 2.45pm** (the first gate on Buckland St when coming from the primary school) Parents will be asked to queue in a social distanced way (at least 1.5m apart) outside the gate and when they reach the front of the queue at the school gate their child will be called by the supervising teacher and meet them at the gate.

Stage Two (Years Three and Four) students will be picked up from **Gate Three at 3.00pm** (the main K-6 gate on the corner of Park Rd and Buckland St). Parents will be asked to queue in a social distanced way (at least 1.5m apart) outside the gate and when they reach the front of the queue at the school gate their child will be called by the supervising teacher and meet them at the gate.

Stage Three (Years Five and Six) students will be picked up from **Gate Two at 3.00pm** (the first gate on Buckland St when coming from the primary school) Parents will be asked to queue in a social distanced way (at least 1.5m apart) outside the gate and when they reach the front of the queue at the school gate their child will be called by the supervising teacher and meet them at the gate.

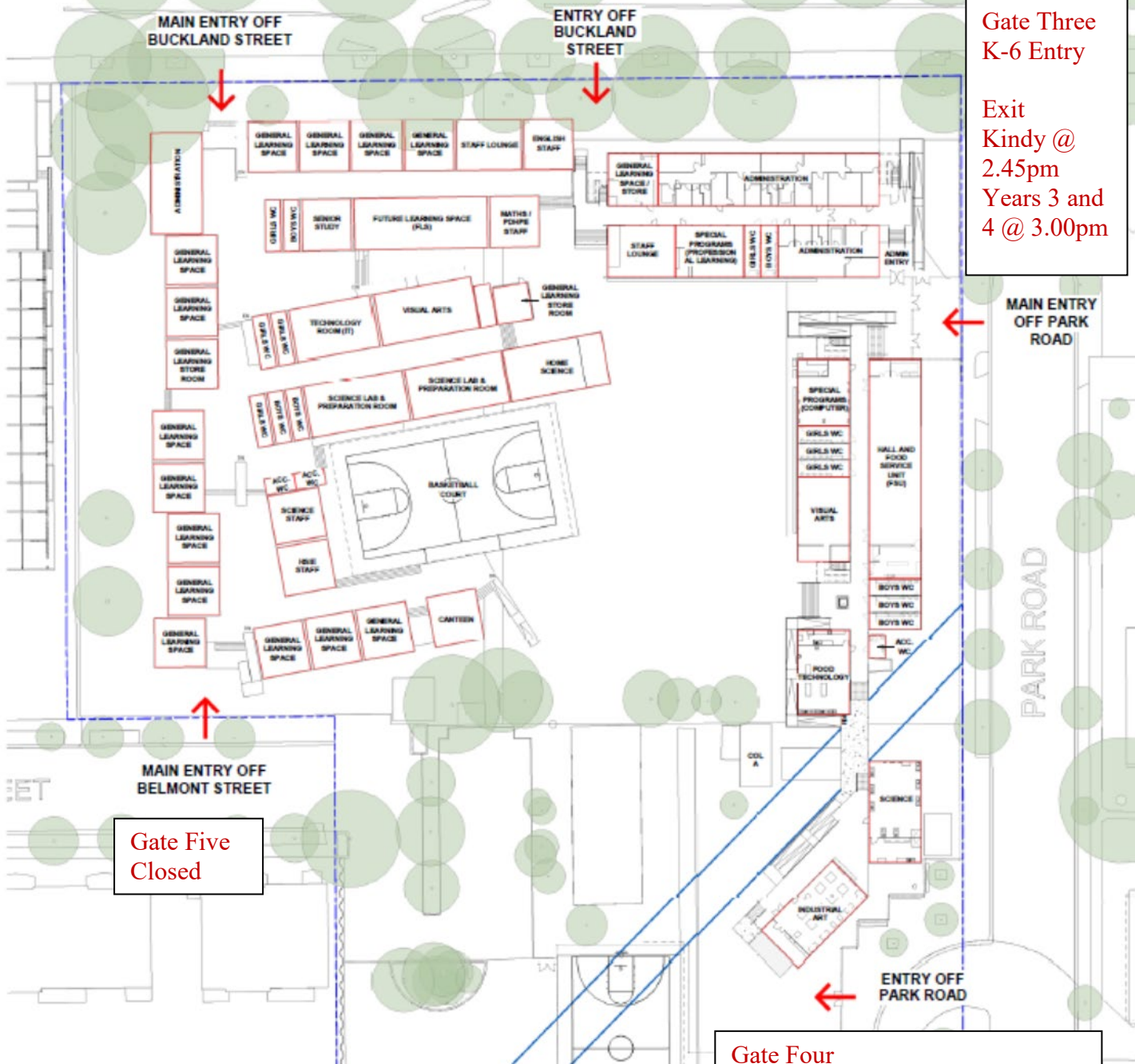
Please see maps overleaf to identify which gate to collect your children from. **Siblings will need to be collected from the gate of the oldest K-6 sibling in the family.** (eg Kindy and Year One siblings would be collected from gate two @ 2.45pm, Year One and Year Six siblings would be collected from gate two at 3.00pm, Year One and Year four siblings would be collected from gate three at 3.00pm)

Gate One
HS Entry and Exit

Gate Two Exit
Years 1 and 2 @ 2.45pm
Years 5 and 6 @ 3.00pm

Gate Three
K-6 Entry

Exit
Kindy @ 2.45pm
Years 3 and 4 @ 3.00pm



Gate Five
Closed

Gate Four
No Entry
Exit for students catching the bus
And Kiss and Go at 3.00pm