



Alexandria Park Community School

Project update

April 2019

Investing in our schools

The NSW Government is investing \$6 billion over the next four years to deliver more than 170 new and upgraded schools to support communities across NSW. In addition, a record \$1.3 billion is being spent on school maintenance over four years. This is the largest investment in public education infrastructure in the history of NSW.

Alexandria Park Community School project

Alexandria Park Community School is being redeveloped to cater for increasing student enrolments from Kindergarten to Year 12. This project will deliver a new school to accommodate 1,000 primary school students and up to 1,200 high school students.

The proposed redevelopment will replace existing classrooms and provide 104 new permanent learning spaces, 6 special education learning spaces, and 12 special program rooms (high school) for subjects including visual and performing arts, science and metal and woodwork. It will involve new core facilities including an administration area, hall, library, gymnasium, multiple sports courts and play spaces.

To facilitate the construction of the new school, two pop-up schools, one for K-6 and the other for 7-12 students have been established. Classes will continue in these pop-up schools for the duration of construction.

Site Establishment

Site establishment has commenced. Richard Crookes Constructions will install temporary fencing and hoarding to separate the site from school grounds.

Site establishment prepares the site so work can begin.

As part of the site establishment, we are:

- erecting construction fencing
- installing the site office and work sheds
- relocating services, such as electricity
- delivering equipment and materials

Demolition works will commence soon with the remediation of known asbestos on the site. This work will be carried out in strict accordance with all applicable legislation, regulations, policies and guidelines to ensure the health and safety of the school and local community at all times.

Construction working hours

Normal working hours will be from 7.00am to 6.00pm Monday to Friday and 7.30am to 3.30pm on Saturdays. No work will take place on Sundays or public holidays.

See more information overleaf.

Frequently asked questions

What steps will be taken to control noise and dust impacts?

Hoarding and shade cloth will be used to reduce noise and dust impacts on the school and its neighbours. Dust from demolition and construction works will be hosed down with water as required. Trucks entering and leaving the site will cover their loads.

What traffic management will be provided during construction?

During construction, traffic management will be implemented as required to ensure the safety of students, teachers, staff, site visitors and residents. The school community and residents will be kept updated by School Infrastructure NSW about heavy vehicle routes, site entry and traffic disruptions on public roads over the course of the project.

How will noise during construction be managed?

The construction program has been designed to minimise impacts of noise for students, staff and residents. Particular focus has been placed on ensuring there is minimal noise during school hours and examination periods. The construction site will be physically separated from the pop-up school which will also minimise the impact of noise. When we need to carry out potentially disruptive work we will give advance notice to local residents so they know what to expect.

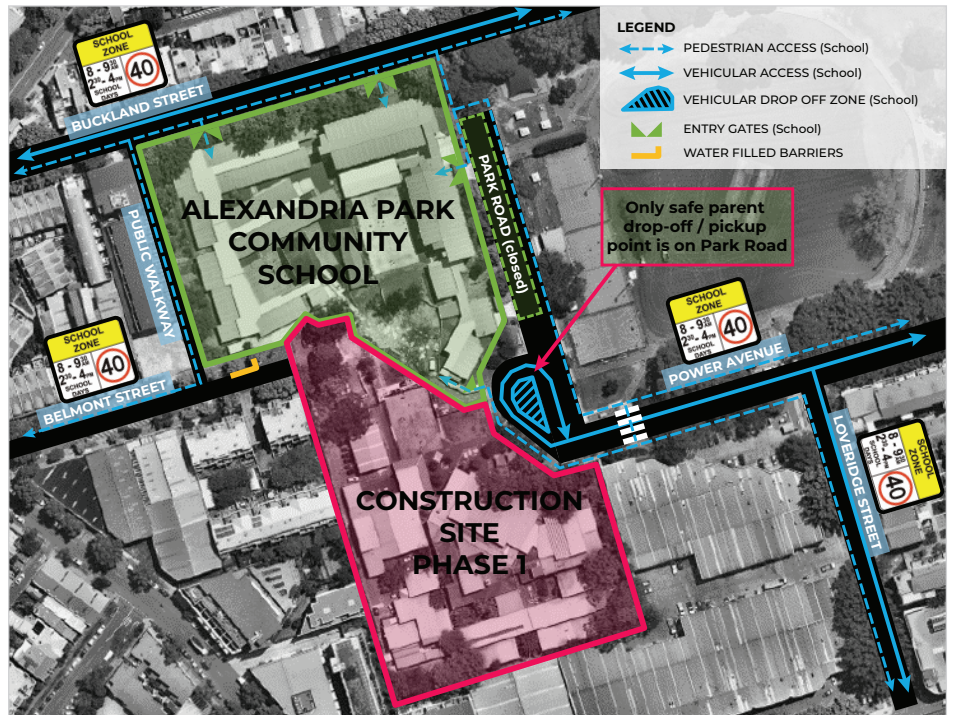
When is the project expected to be completed?

The upgrade to Alexandria Park Community School is expected to be completed in early 2022.

Will any trees be removed as part of the redevelopment of the school?

Yes, as part of the project, some trees have been removed as they were identified in the arborist report as suffering from structural and health defects and some have been removed for the redevelopment. However, the current removal of trees has been kept to a minimum to have the least impact on natural

vegetation. Numerous trees have been identified as significant to the area; these will be protected during construction and be maintained.



Alexandria Park Community School Traffic Control Plan

Will more trees be removed?

Yes, as part of the redevelopment, more trees will be removed. However, as part of the landscaping, replacement trees will be planted.

What safety measures will be in place?

The safety of the school and local community is our highest priority. Construction planning will ensure minimal impact on school operations. Measures such as hoardings, signage and separate access points are in place to ensure students will not have access to the construction site. Construction hoardings will be erected around the construction area to separate the site from occupied areas of the school to ensure the safety of staff and students.

Deliveries will be scheduled for outside of school drop off and pick up times and traffic controllers will be on-site to assist with contractor deliveries.

For more information contact:

School Infrastructure NSW
Email: schoolinfrastructure@det.nsw.edu.au
Phone: 1300 482 651
www.schoolinfrastructure.nsw.gov.au