

ALEXANDRIA PARK COMMUNITY SCHOOL

Park Road Alexandria 2015

phone +61 2 9698 1967

email alexparkcs-c.school@det.nsw.edu.au

web www.alexparkcs-c.schools.nsw.edu.au

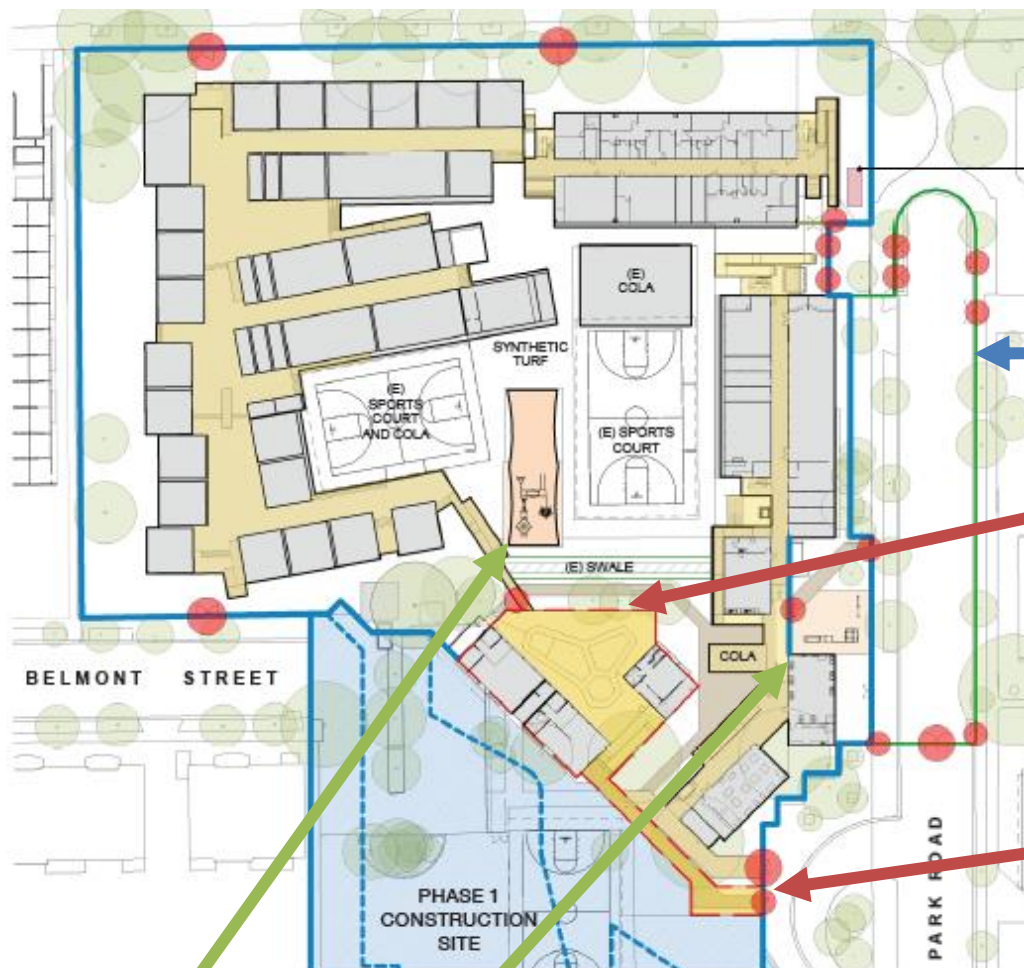


Monday 27th August, 2018

PARK ROAD CLOSURE

Dear parents and carers,

As a part of the redevelopment of Alexandria Park Community School, the initial works for the closure of Park Road will commence during the week beginning Monday 27th August. The road closure is part of a scope of works that will provide our students with additional play space pending the relocation of Wunanbiri Pre-School.



New fence to be erected around existing Park Road to create additional play space exclusively for APCS students during school hours.

New location of Wunanbiri Pre-school. Fences will be constructed to establish a separate site for Wunanbiri buildings and playground.

A separate secure entry gate will be created exclusively for Wunanbiri families.

The playground equipment will be relocated in two sections. The first section (pictured right) will be relocated to the astroturf area between the basketball courts. The safe zone (softfall) and shade structure will also be relocated to this area.

The remaining equipment will be relocated to the grass area near the primary hall.



Park Road Works

From Tuesday 28th August, the black palisade fencing, which is situated along the footpath of Park Road will be relocated behind the tree line, just in front of the primary hall. These works will not affect parking or drop off/pick up arrangements.

AT 5:00PM FRIDAY 31ST AUGUST, PARK ROAD WILL BE OFFICIALLY CLOSED TO ALL TRAFFIC.

From Monday 3rd September, new fencing will be erected around Park Road. The boundary of this fencing can be seen in the diagram above. The fenced area will be for exclusive use for APCS during school hours. Pick up and drop off arrangements will change. Details of these changes can be found further below.

Relocation of Wunanbiri Pre-school

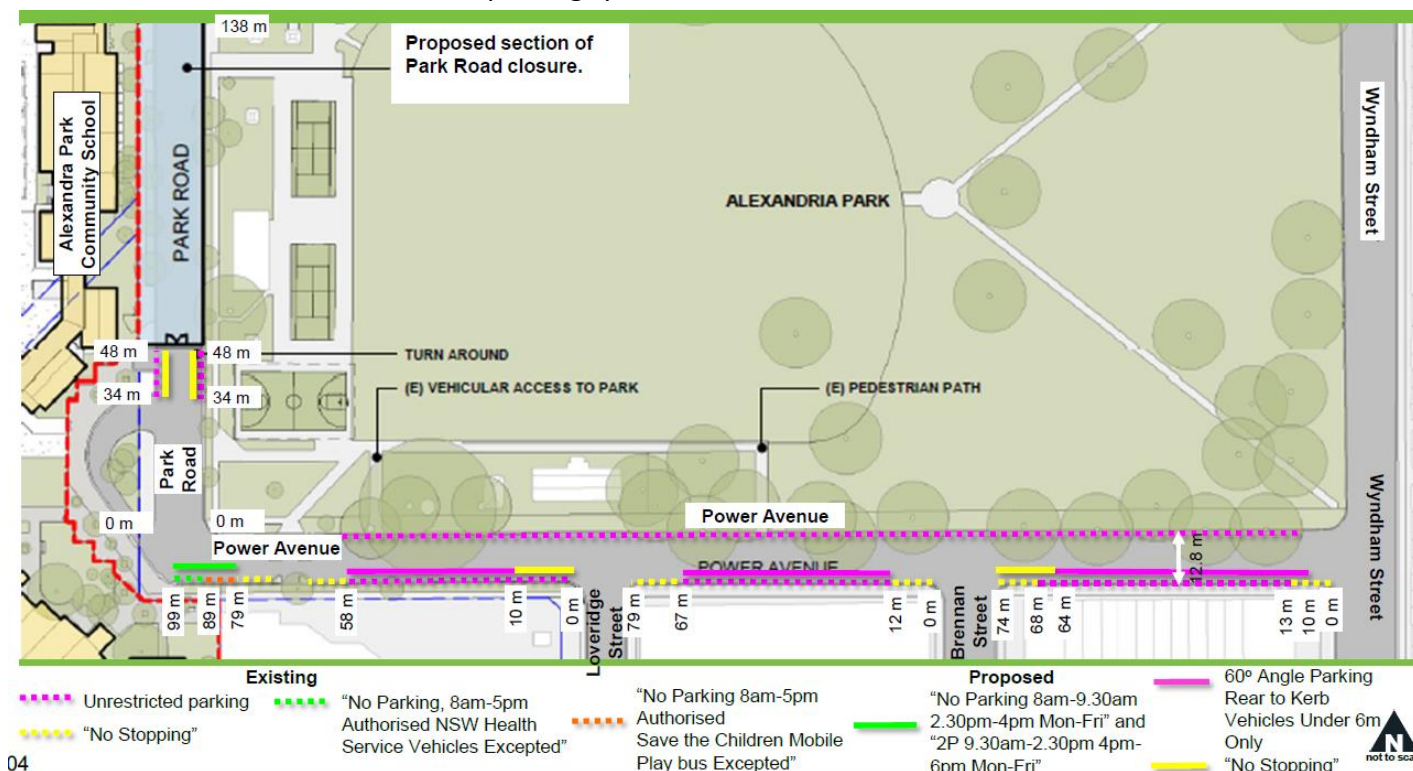
From 10th September, initial works to relocate Wunanbiri Pre-school will commence. To begin, temporary construction fencing will be erected and the area will be secured. Demountable buildings will then be brought onto the site and permanent site fencing will be constructed.

Play Equipment to be Relocated

The existing playground equipment will be relocated in two sections. The first section will be relocated to the artificial turf area between the two basketball courts. The shade structure that covers the equipment will also be relocated to provide shade to this section of the equipment. The other (smaller) section will be relocated to the grass area located between the primary hall and science lab. This section will be secured by fencing and gates that teachers will be able to access to take groups of students to use the equipment when appropriate.

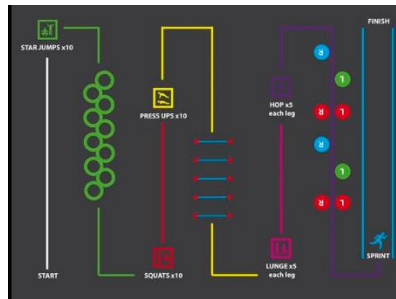
Parking Changes

Please see below map for changes to parking on Park Road and Power Avenue. Please note that there will be **NO PARKING ON PARK ROAD FROM FRIDAY 31ST AUGUST AT 5:00PM**. However, line marking to create additional car spaces on Power Avenue will occur between Tuesday 28th and Friday 31st August. There will be no loss in the total number of car parking spaces in the Park Road & Power Avenue area.



Road Designs (SRC)

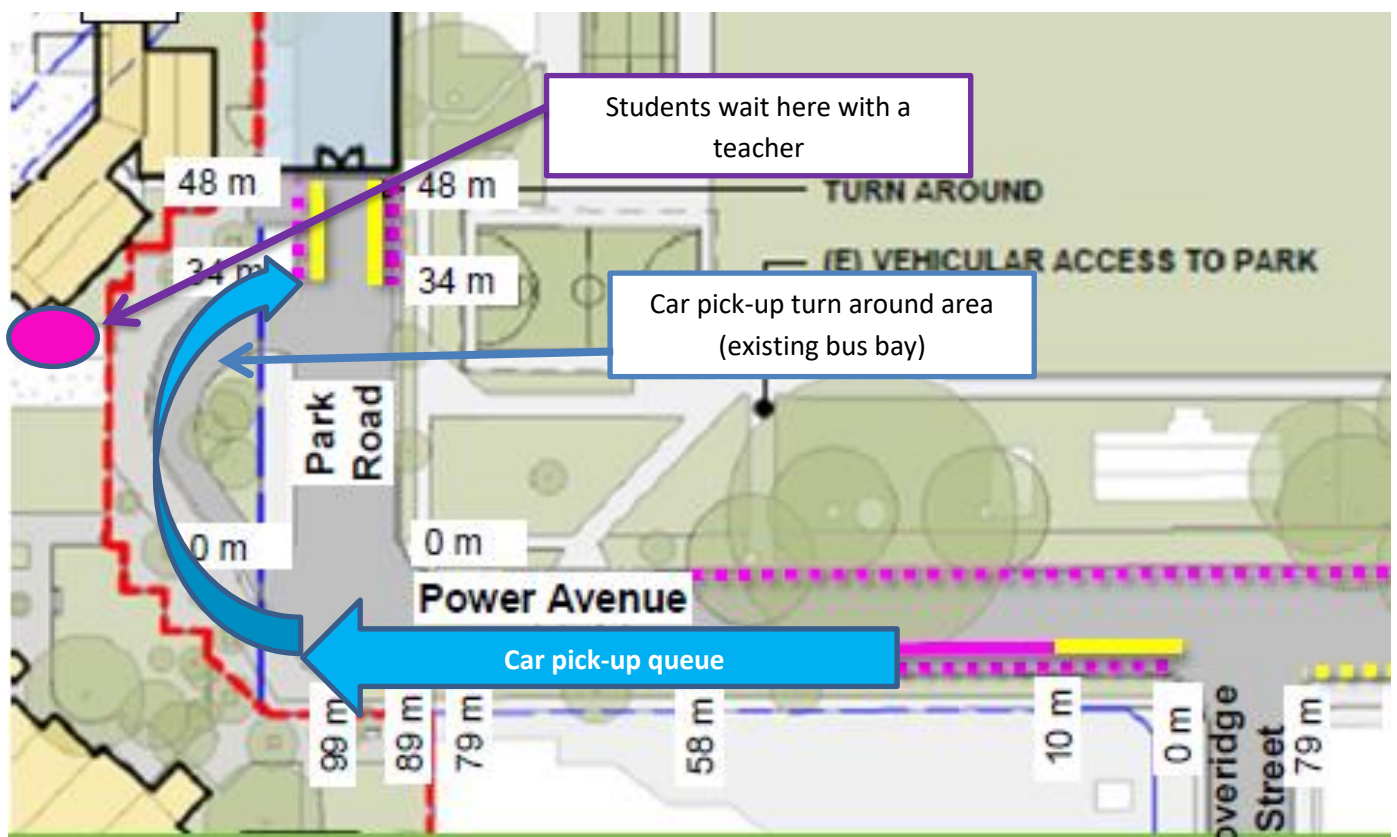
When Park Road is officially closed and fenced, there will be artwork and playground games applied to the road surface to make this an appealing and exciting play space for students. The primary and secondary SRC teams have been meeting to discuss the kinds of designs they like and dislike and will be working with designers to ensure Park Road is a play space that is appealing to Alex Park students. An example of some of the designs the SRC teams have been looking at can be seen below.



Drop Off and Pick Up

The following changes will be made to morning drop off and afternoon pick up arrangements **FROM MONDAY 3RD SEPTEMBER**. For everyone's safety, please ensure you follow these routines:

- All cars are to use the existing bus bay to drop off and pick up students
- Whilst waiting to enter the bus bay, cars will queue along Power Avenue (no cars are to overtake in an attempt to reach the front of the queue)
- In the afternoons, students will wait in the pick-up waiting area (just inside the bus bay gate) supervised by a teacher. The teacher will supervise students entering vehicles.
- If a student is not at the waiting area when a parent/carer arrives in their car, each car will be given 2 minutes to wait in the bus bay before being asked to move on and join the queue again
- Once students are safely in vehicles, cars exit the bus bay and travel along Power Avenue



Access to the School/Main Office

The main access points to the school and front office will remain the same. The gates at the end of Park Road are unchanged and are the best point of access to go to the front office.

You are still able to access the school from the Buckland Street, Belmont Street and Bus Bay gates.

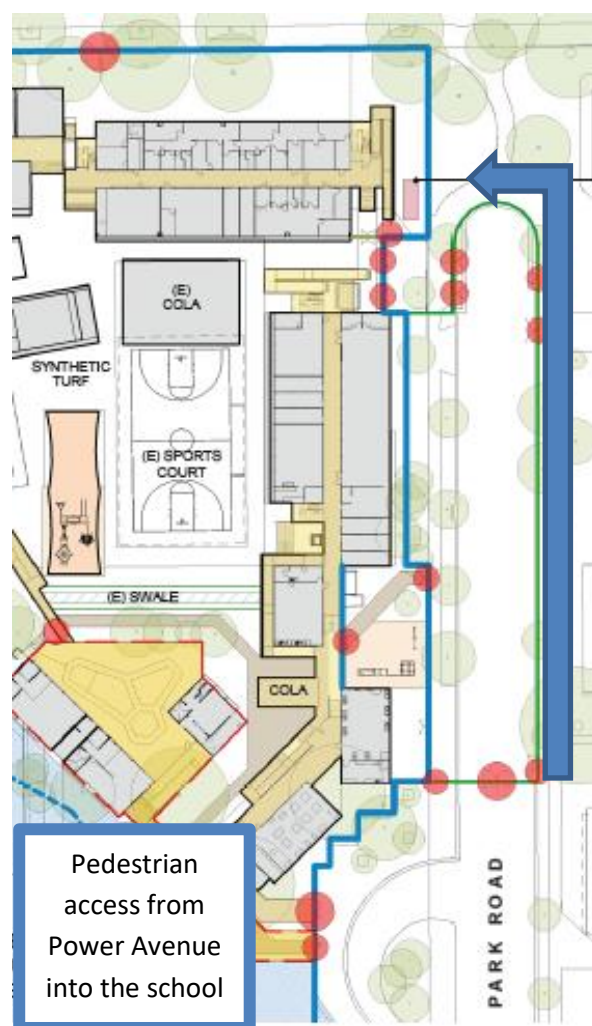
Some additional gates will be installed with the new fencing that will surround Park Road. However, these will be locked during the day to provide a secure play space for students. These gates will be opened after school hours and on weekends to enable the community to access Park Road as a play space.

The pedestrian footpath on the tennis court side of Park Road will provide the main pedestrian access from Power Avenue into the school.

Camp Australia

Camp Australia will continue to operate before and after school care as they have throughout 2018.

Families can still access the school through the main gate at the end of Park Road. Access through the bus bay gate is being considered and further information will be released once a full assessment of the changes have been undertaken.



Community Centre Relocation

The relocation of the community centre is in progress. From Term 4, Jo Fletcher and her team of amazing workers will be operating from the new community centre within the pop up buildings. The new community centre is located across the corridor from the main office near the end of Park Road.

All programs that are currently operating will continue until the end of Term 3. A revised schedule of programs that will be on offer in Term 4 is currently being finalised and will be communicated in upcoming newsletters.

Phase 1 Construction of Redevelopment

Phase 1 of construction of the redevelopment is on track and scheduled to begin early in 2019. Additional information on the redevelopment can be found at:

<https://www.schoolinfrastructure.nsw.gov.au/projects/a/alexandria-park-community-school.html>