

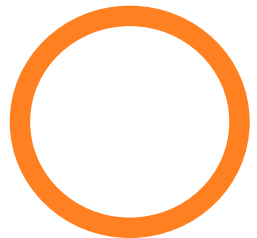
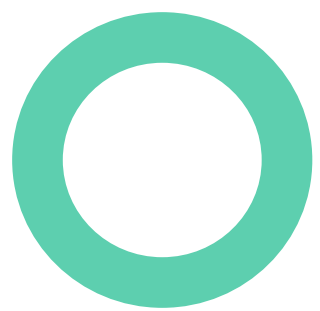
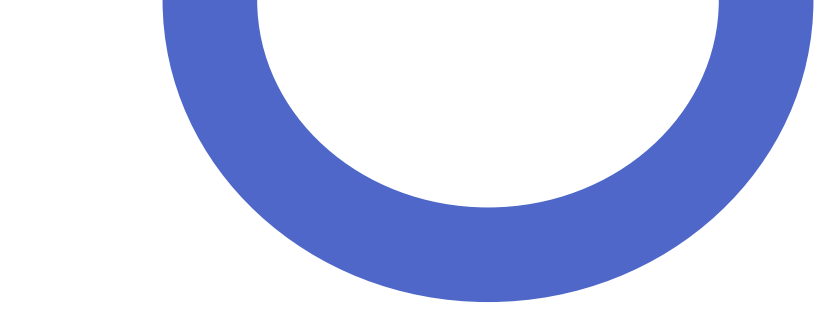


# Kindergarten 2024 Parent Information Session Curriculum

Alexandria Park Community School  
Community, Opportunity, Success  
Beginning in the Early Years

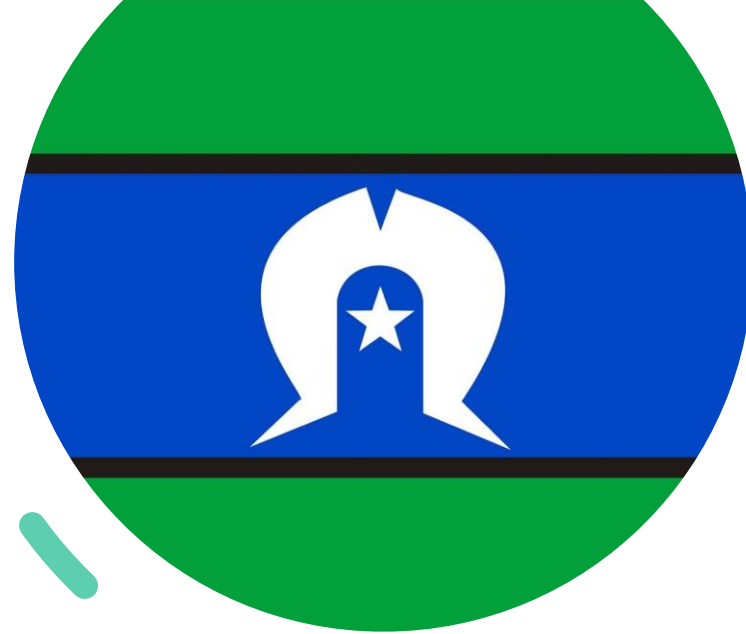


Alexandria Park



# Acknowledgement of Country

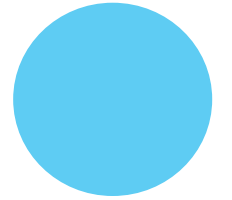
We would like to acknowledge and pay respect to the Cadigal people of the Eora nation, the traditional owners of the land on which we meet today. We acknowledge their living culture and their unique role in the life of this region. We would also like to pay respect to elders past and present, and to any Aboriginal people here today.



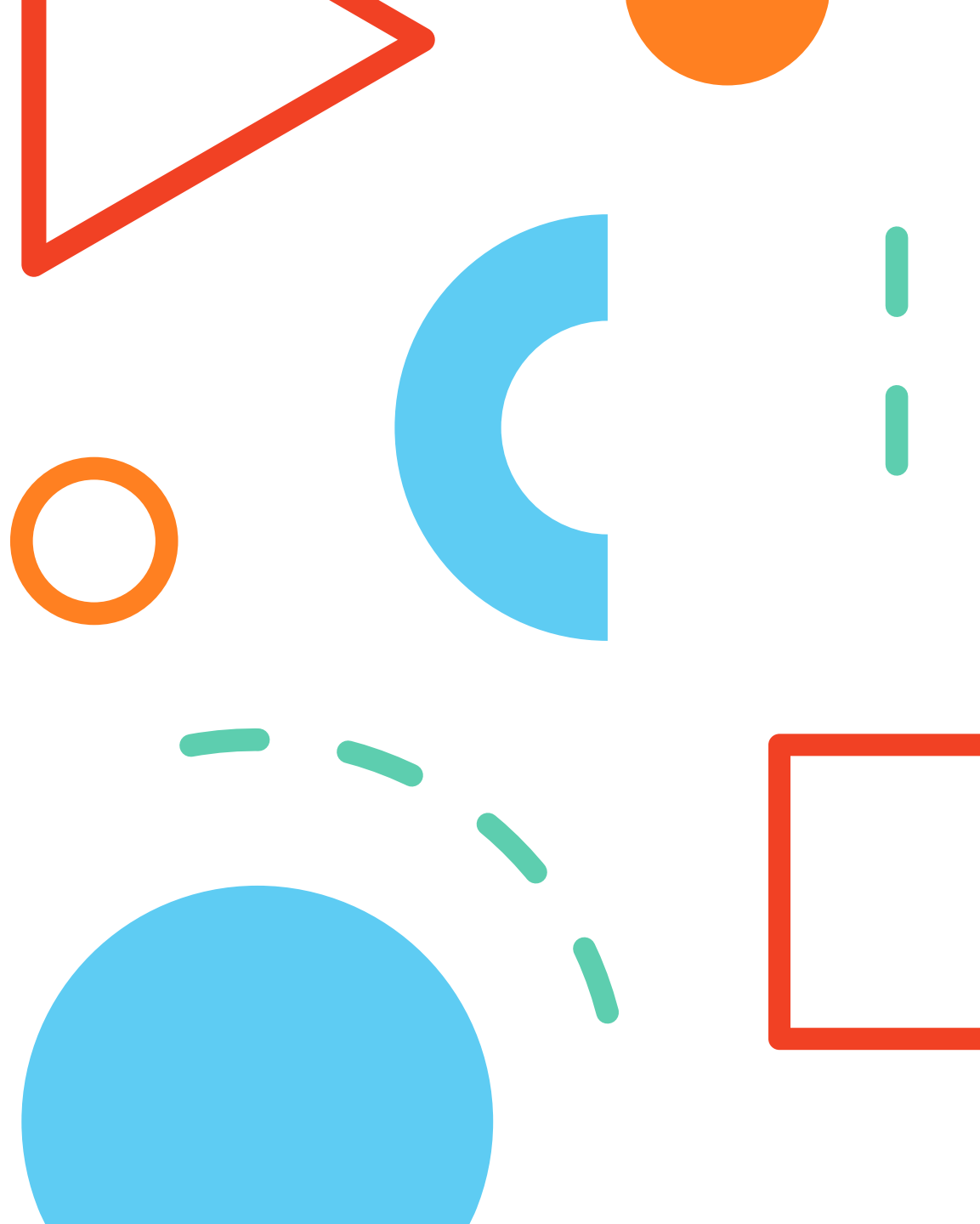


# Welcome!

- Ms Debra Lade  
Principal
- Mr David Olsen  
Deputy Principal K-2
- Mr Paul Keevers  
Deputy Principal Years  
3-6
- Ms Danielle Ozdirik  
Assistant Principal  
Kindergarten
- Ms Sharyn Casey  
Assistant Principal  
Inclusive Education
- Aunty Deb Daley  
Aboriginal Education  
Officer
- Ms Jo Fletcher  
Community Centre  
Manager
- Camp Australia  
Regional Manager
- Amanda and Joasia  
Kindy Enrolments  
Officers



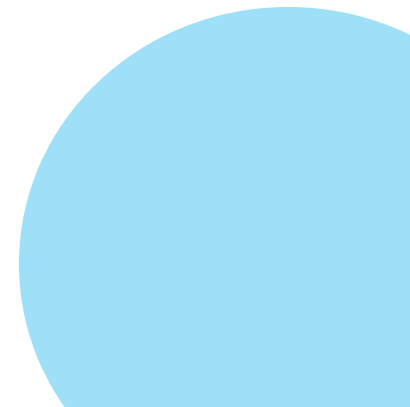
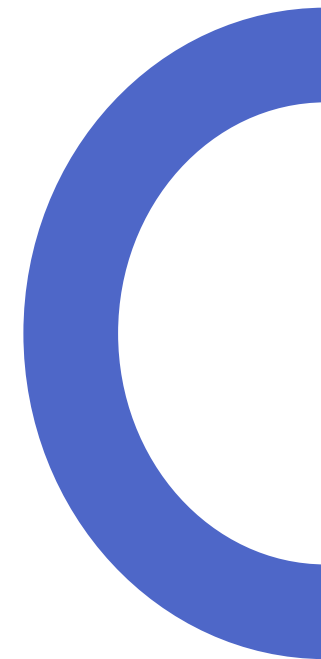
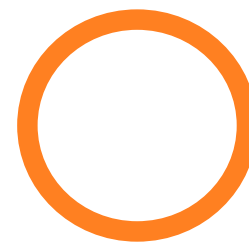
**Principal's  
Welcome**  
Mrs Debra Lade







# Our Fabulous School



# POSITIVE BEHAVIOUR FOR **LEARNING**

*at Alex Park*

**BE A LEARNER**

**BE RESPECTFUL**

**BE SAFE**



- Positive Behaviour for Learning (PBL) is Alex Park's whole-school behaviour support program.
- It provides students, staff and families with clear expectations for behaviour and common, positive language for discussing behaviour.



# Our vision for Kindy



Creative



Hands-on



Engaging



Playful



Joyful



Meaningful



# Curriculum

- English
- Mathematics
- History and Geography
- Science and Technology
- PDHPE (Physical Development, Health and Physical Education)
- Creative Arts (Visual Arts, Drama, Dance, Music)





# English

- Learning to read and write through hands-on, fun and active learning experiences.
- Whole-class and small-group lessons.
- Speaking, reading and writing are also integrated throughout the Kindy day.

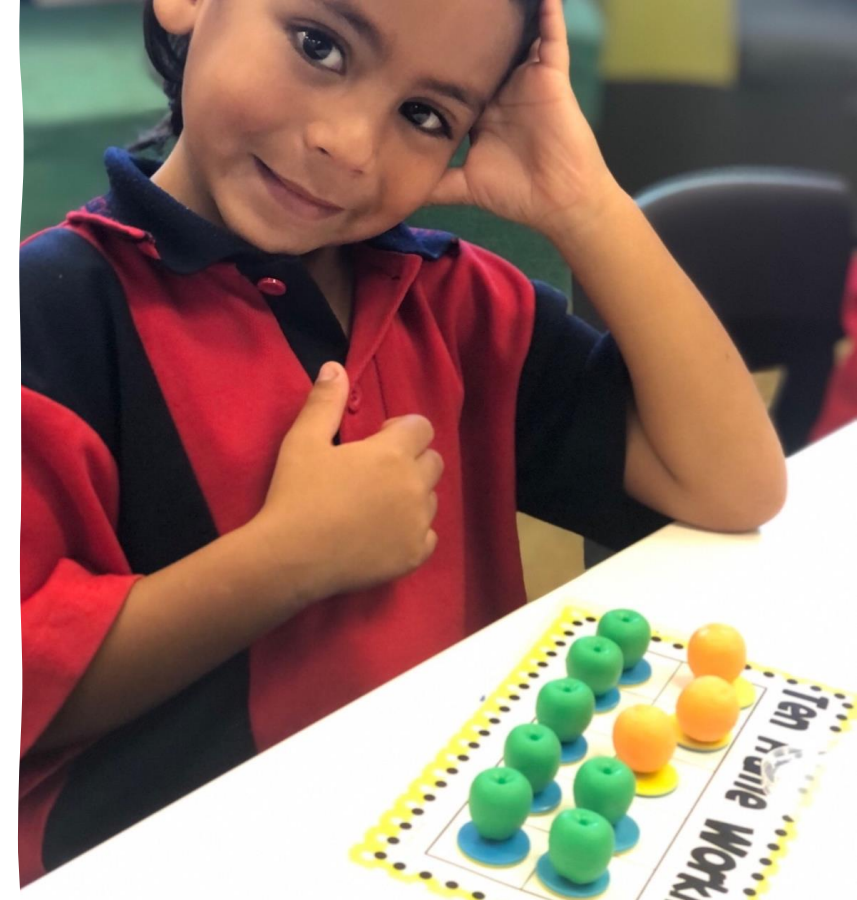
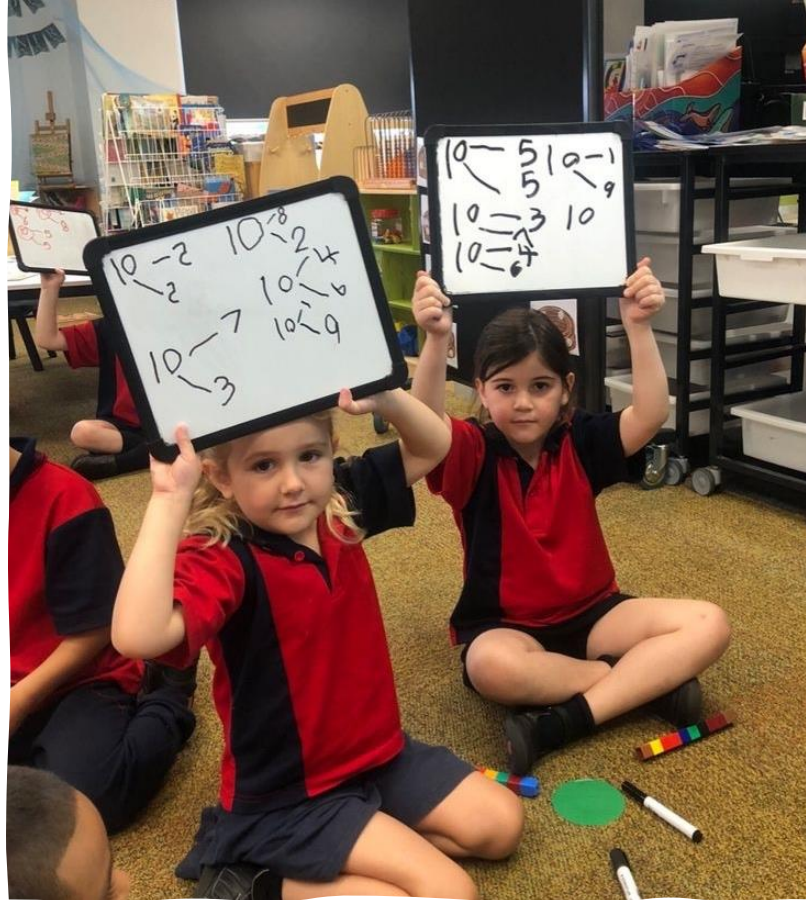
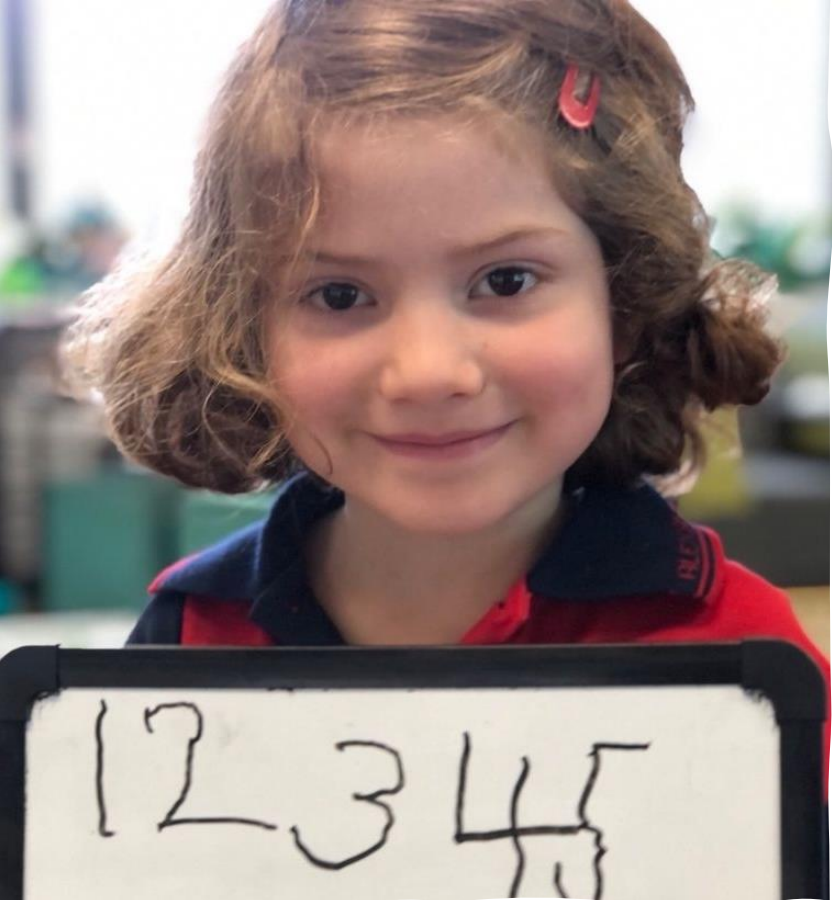


# English – what do students learn?

- **Speaking and listening**  
Conversation skills  
Vocabulary
- **Reading**  
Phonics  
Reading with fluency and expression  
Comprehension  
Reading books with about 4 sentences per page
- **Writing**  
Sounding out to spell simple words  
Common words from memory  
Simple sentences  
Writing 3-4 connected sentences about a topic  
Purposes for writing (to entertain, inform, persuade)



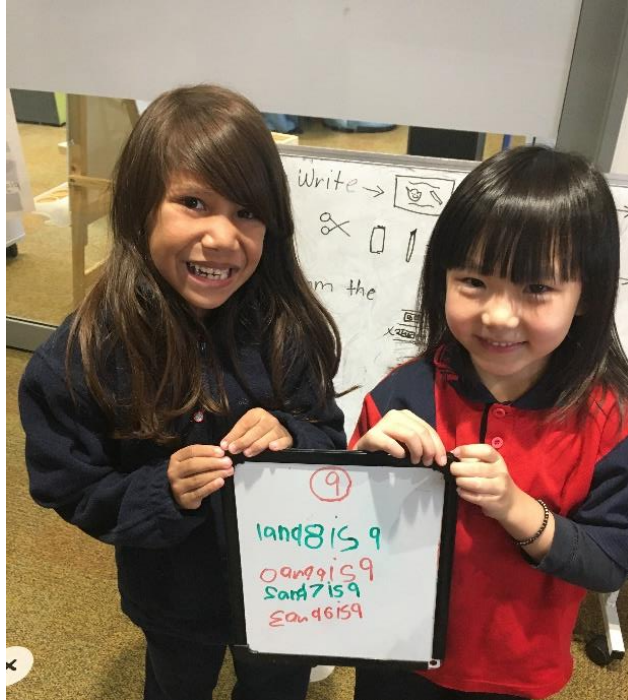




# Mathematics

- Learning to count, solve mathematical problems and use shapes, measures and data in hands-on, engaging activities.
- Whole-class and small-group lessons.
- Maths is also integrated throughout the Kindy day.





# Mathematics – what do students learn?

- **Number and Algebra**

Numbers to 20

Counting forwards to 30 and back from 20

Counting collections of objects

Adding and subtracting using objects

Sharing objects equally

Repeating patterns

- **Measurement and Space**

Sorting and describing 2D shapes and 3D objects

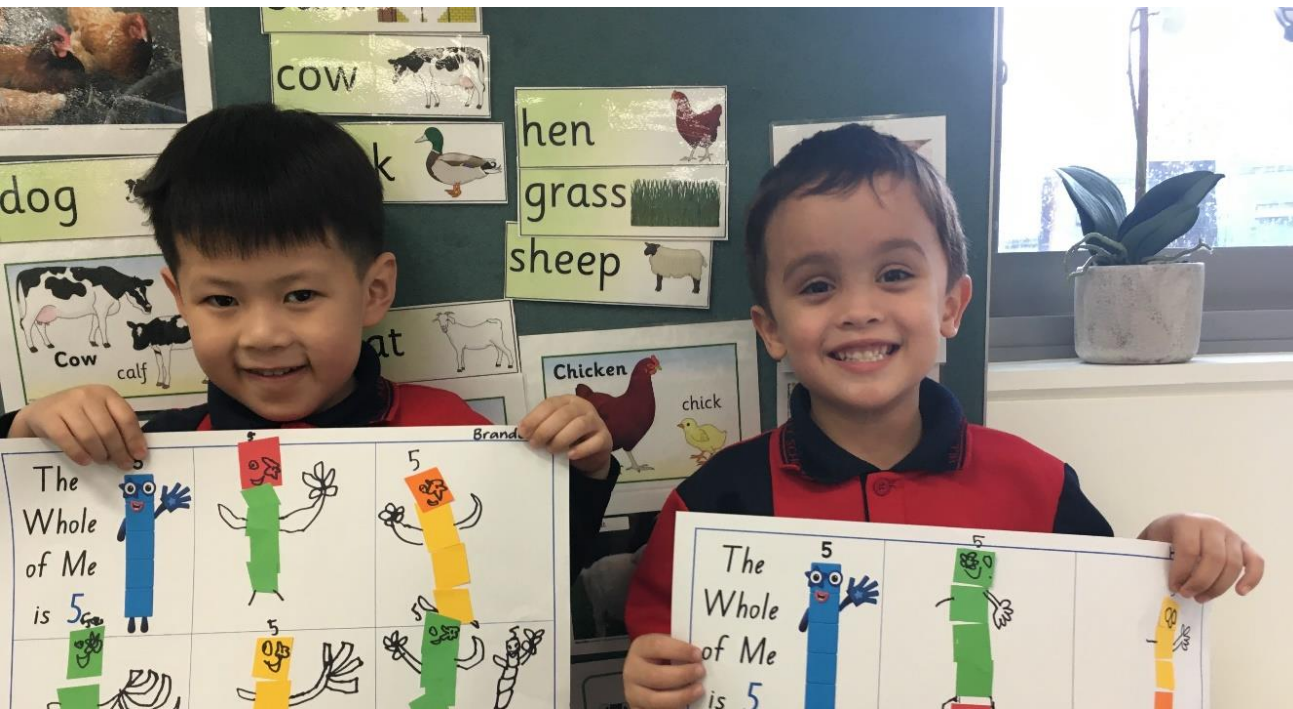
Comparing lengths, areas, volumes and masses

Reading o'clock times

- **Statistics and Probability**

Sorting groups of objects

Asking questions to collect simple data





# Making learning fun

- Explore and Learn
- Bush School
- Year 6 Buddies
- Sport
- Library
- And much more!







# Digital Learning

---





# Specialist Music K-6

---



# School Readiness

## Self care skills

- Blows nose, uses public toilet independently, opens school bag and lunchbox
- Takes off jumper, ties shoelaces etc.

## Academic Skills

- Looks at books for enjoyment
- Understands numbers can be used to count
- Sees similarities and differences in shapes & patterns

## Communication Skills

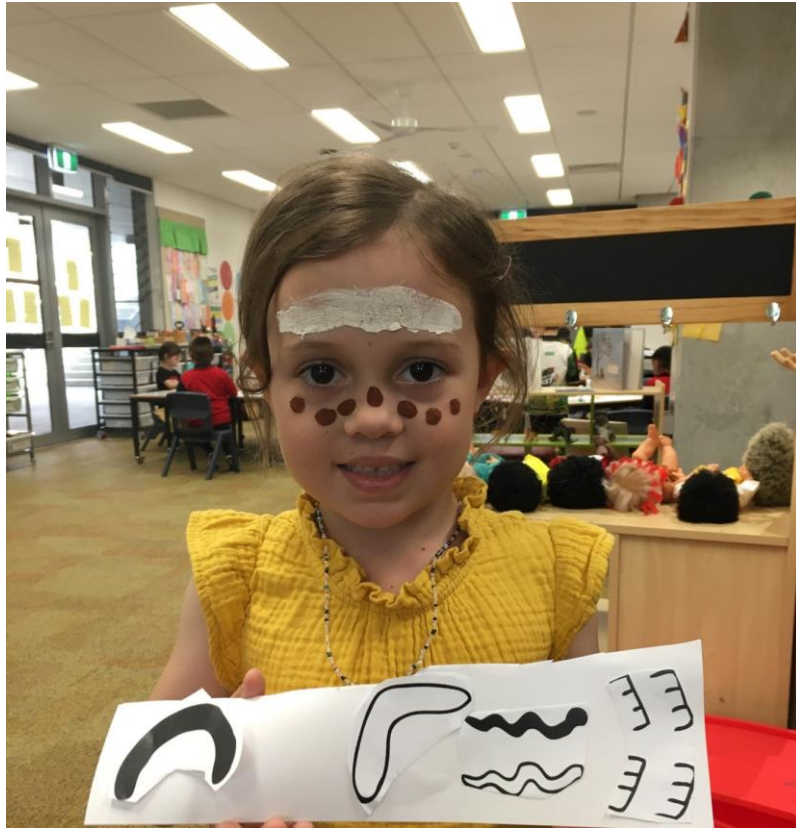
- Asks and answers simple questions
- Expresses needs to others

## Social Skills

- Shares an adult's attention with other children
- Shares and takes turns with peers
- Finishes a task and cleans it up







# Celebrating Diversity

---



# Inclusive Education Unit

---



# About the IEU

## Eligibility

- children from Kindergarten to Year 6 diagnosed with Autism/Moderate Intellectual Disability.
- capacity for three classes (24 students in total)

## Curriculum

- Autism classes - 7 students with one teacher & one SLSO.
- personalised learning mapped to mainstream curriculum

## Designated sensory spaces

- strong focus on social and emotional learning and regulation
- two multi-purpose sensory rooms

## Inclusion

- opportunities to transition to mainstream classes for learning or special programs
- mainstream students access quiet play space at lunch and recess



# School Readiness Playgroup

For families with children enrolling in Kindergarten in 2024  
at Alexandria Park Community School

**Wednesdays 9:15am-11am**  
**During school terms**

**Alexandria Park Community Centre**

The School Readiness program provides an opportunity for children to participate in a range of fun activities to prepare for their enrolment in Kindergarten

**Cost is \$2 per family**

**For more information and to register for  
the program contact Jo 0419 119 390**





# Orientation

## Kindergarten Orientation (for children)

(attend all sessions)

- Wednesday 1<sup>st</sup> November 9:30am
- Wednesday 8<sup>th</sup> November 9:30am
- Wednesday 15<sup>th</sup> November 9:30am

## School Readiness Information Session (for adults) ONLINE

- Wednesday 22<sup>nd</sup> November 5pm



# Best Start and first day of school

## Best Start dates

(one 45min session on one day)

- Thursday 1<sup>st</sup> February 2024
- Friday 2<sup>nd</sup> February 2023
- Monday 5<sup>th</sup> February 2023

## First Day of School

(staggered start time between 9-11am)

**Tuesday 6<sup>th</sup> February 2023**





# Before and After School Care with Camp Australia

## Camp Australia's Your OSHC and Rocketeers

### What we offer

Camp Australia's Alexandria Park Community School service offers **Your OSHC**, our **term time** before (BSC) and after school care program (ASC), and **Rocketeers** during the **school holiday** periods.

Our experienced team of educators are dedicated to providing a safe and engaging space for your child to **learn and grow through experience**. We focus on **play based learning** and tailor our experiences to children's individual needs and interests.

Each day is **unique** with exciting planned experiences and zones within the room that allow children to follow their passions and connect with their peers. Some of the experiences we offer include:

|                             |                       |
|-----------------------------|-----------------------|
| Outdoor play                | Creative time         |
| Life skills                 | Cooking               |
| Mindfulness                 | Construction          |
| Performing arts             | Cultural exploration  |
| Board games                 | Community Involvement |
| Imaginative play            |                       |
| Art and creative activities |                       |

Our **healthy eating philosophy** operates at every service, every day. We provide children with a nutritious breakfast and afternoon tea, including a snack later in the afternoon. We focus on fresh produce and use **at least 75% of the weekly food budget for seasonal fresh fruits and vegetables!**

### Kindergarten Transition Program

We always take special care to ensure a smooth transition into OSHC. What we do:

- **Deliver and wait** with children at their lines in the morning
- **Collect** children from their classrooms in the afternoon
- Introduce each child to the Camp Australia team
- Pair each child with a **buddy**
- Show each child around
- Check up on each child throughout the session to make sure they are comfortable, and most importantly, **enjoying themselves!**

### Enrolling and Booking

To attend our care, your child must be registered first. Registration is **FREE!**

Our simple booking structure ensures the best family experience whilst also providing fantastic flexibility to suit most schedules.

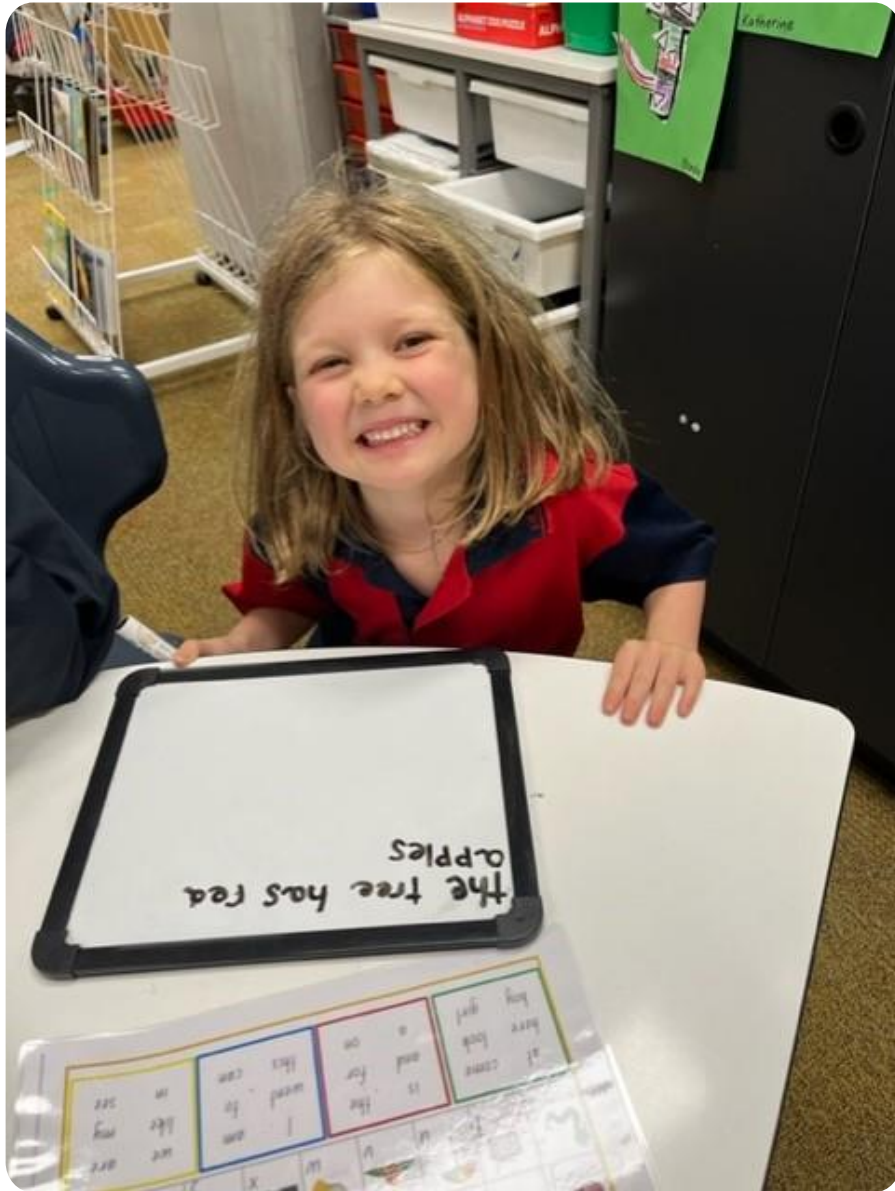
**Eligible families can reduce the cost of care with a Government subsidy.** The CCS gives parents up to 85% off their fees.

Our new Portal gives families unrivalled access to manage their accounts and bookings, and view and understand their bills. Our new and updated calendar view also gives families a quick digest of their current bookings.

| Care Type  | Hours         | Recurring Full Fees | Casual Full Fees |
|------------|---------------|---------------------|------------------|
| BSC        | 6:45 – 9:00   | \$19.70             | \$24.70          |
| ASC        | 15:00 - 18:00 | \$30.70             | \$35.70          |
| Rocketeers | 6:45 – 18:00  | Early \$68.51       | Late \$78.51     |

For more information, registration and booking, please visit [www.campastralia.com.au](http://www.campastralia.com.au) or call 1300 105 343

Confidential – not for distribution



# Common Questions

## How many children in each class?

- About 20

## How many classes?

- Usually 4 or 5

## How many teachers?

- Each class has 1 teacher. Sometimes teachers may job-share, so 2 teachers may share a class.

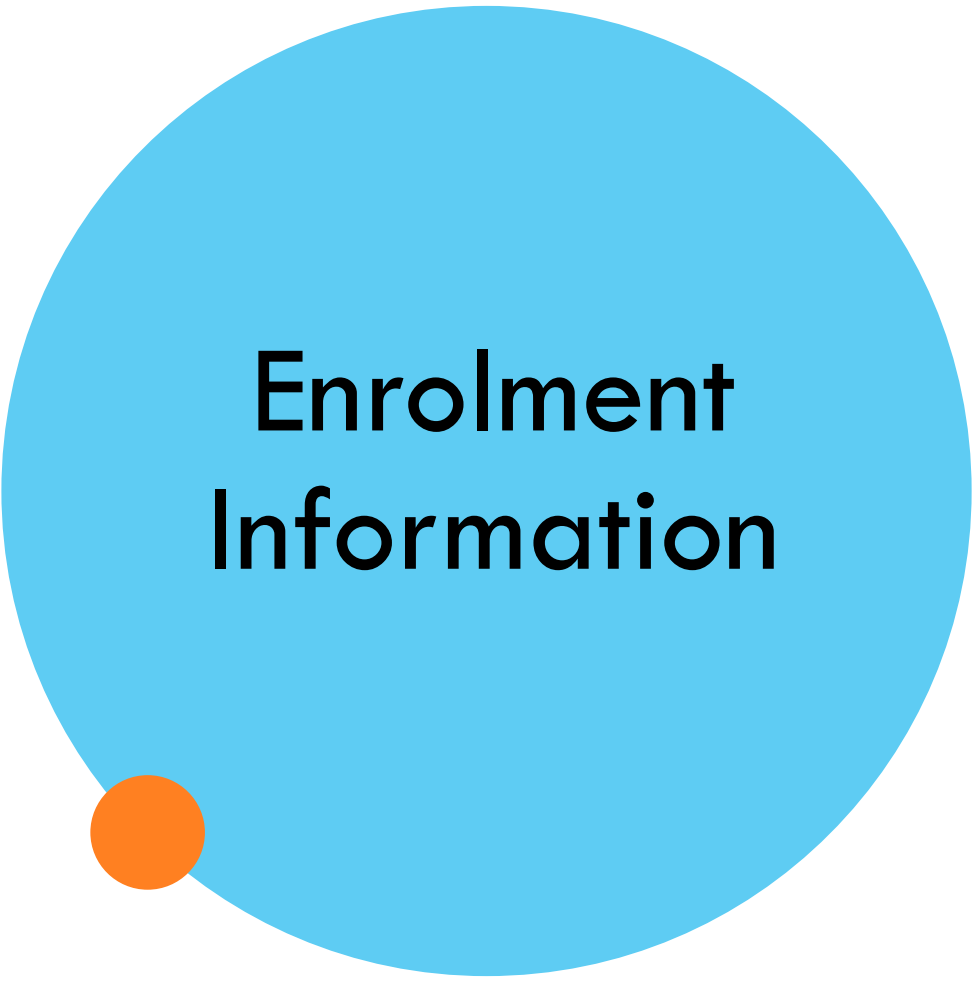
## Can my child enrol if we live out-of-area?

- You can apply using an out-of-area application form. We accept very few out-of-area applications and only for compelling reasons. You should enrol at your local school as a backup in case your application is not successful.

## Do you cater for students with additional learning and support needs?

- Yes, absolutely! Please let us know your child's needs as soon as possible so we can work together to support them to have a positive, happy and fun start to school!





# Enrolment Information

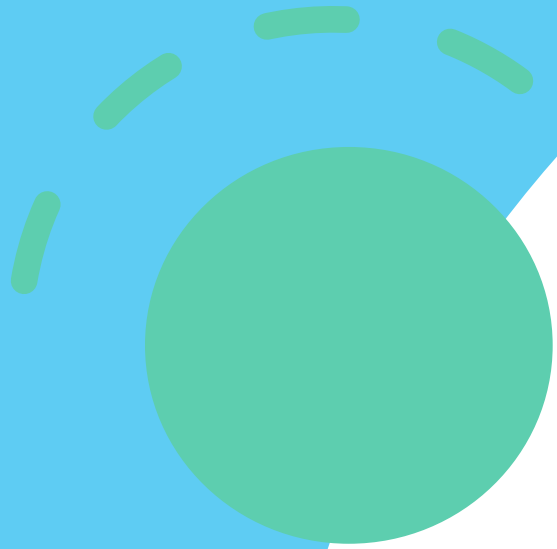


<https://alexparkcs-c.schools.nsw.gov.au/>

[alexparkcs-c.school@det.nsw.edu.au](mailto:alexparkcs-c.school@det.nsw.edu.au)  
(Put *Kindy 2024* in the subject line)

**Enrolment Packs Available**

**Online Enrolment**



**Question Time**



# Thank you!

Please email specific questions or concerns about your child to school email address with *Kindy 2024* in the subject.

**alexparkcs-c.school@det.nsw.edu.au**

*We are looking forward to seeing you at the orientation days and our next information session.*

***Wednesday 1<sup>st</sup> November***

***School Readiness***



Please complete our survey.  
Thank you for your feedback!

<https://forms.gle/bKsj3hvuPVBWFdy78>