



APCS On the Move – Number 4

Please remember that our Term 3 School Development Day has been rescheduled for Monday 12 October. This means that Monday 12 October is a pupil free day.

Much progress has occurred since our last edition of APCS on the Move. The construction remains very much on schedule with many of the High School spaces now moving towards completion. The tower crane has been removed, basketball posts installed in the Oraywa and the scaffolding has slowly been dismantled to reveal the building within. In addition to the progress in construction, our new play equipment has already been installed and landscaping ready to go once the heavy machinery is off site. The school is encouraged by this progress and remains confident that our students and staff will move into their new buildings at the commencement of Term 4.

Transition timeline

Friday 18 September	Preparation for the physical relocation of school commences Non-essential resources prepared for relocation.
Monday 21 September to Thursday 24 September	Student Orientation Week to new site. Non-essential resources relocated to new site.
Friday - September 25	TERM 3 concludes Packing Administration, staff rooms and store-rooms for relocation.
Monday - September 28 to Friday - October 9	SPRING VACATION Pack, relocate and unpack classroom home-bases in new site. Camp Australia operating offsite during vacation period and not at APCS.
Monday - October 12	Pupil Free Day – Camp Australia available
Pupil Free Day	All staff to attend School Development Day
Tuesday – October 13	TERM 4 Begins All students K-11 return for our first day occupying new APCS site

Gomberee language place and space names

Space	Concept	Gomberee language name
COLA	Meeting place/many to be meeting	Milperra
Primary school playground	Firm ground	Bura gorang
Rooftop playground	Playing in the clouds	Oraywa
Staff hub	Let's help	Jenla
Administration office	Welcome	Bunin
Canteen	To be cooking	Crua
Library / Student services hub	Learning/working together	Yaka taka
Rooftop agriculture plot	of hunting and gathering	Maani



Figure 1 The Maani – meaning ‘of hunting/gathering’

Building names and graphics

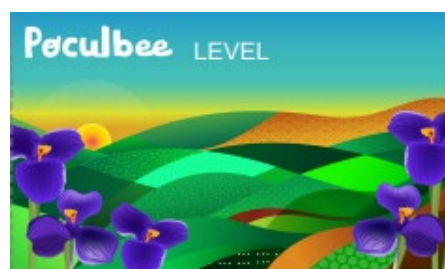
The buildings have been given Gomberee names based on the names of our sport houses

M = Mujmoonah (Red Gum). Phase 2 only

W = Warrettah. (Waratah). High school spaces

T= Wautangal. (Banksia). Primary & High school in Phase 1

P = Pocolbee (Purple Iris). Primary School



Building works update

- The Wautangal, Pocolbee, Jenla and Bunin are nearing completion with the internal fit out and furniture now in place.
- The Milperra continues to go up and transform the new school entrance.
- From Term 4 the only school entrance will be on Park Road near the Milperra. Phase two works will start in the area of the temporary school later this year. Year 12 students will have access to HSC exam rooms in the temporary school from the Buckland Street entrance.

The list of things to finalise remains a constant focus of the school's transition team. After recent moves many of our staff already know what to expect and are making preparation for their students as well as themselves for the big move. Mr David Olsen joins the change management team to provide primary school expertise to the change management and transition plan. Mrs Sheree Bourke and Mr Alex Forbath are working with great intensity to ensure the school is prepared as best as it can be ready for the transition. From bicycle storage to power point locations Alex and Sheree, are not only subject experts in their own academic areas but they are not out of place in hard hats on the construction site. Included in our transition timeline is the opportunity for students to become familiar with their new classrooms and play spaces. Our executive leadership teams and PBL teams are working on various

ideas and processes to assist our students to navigate their way around their new home and surrounds during the last week of this term.

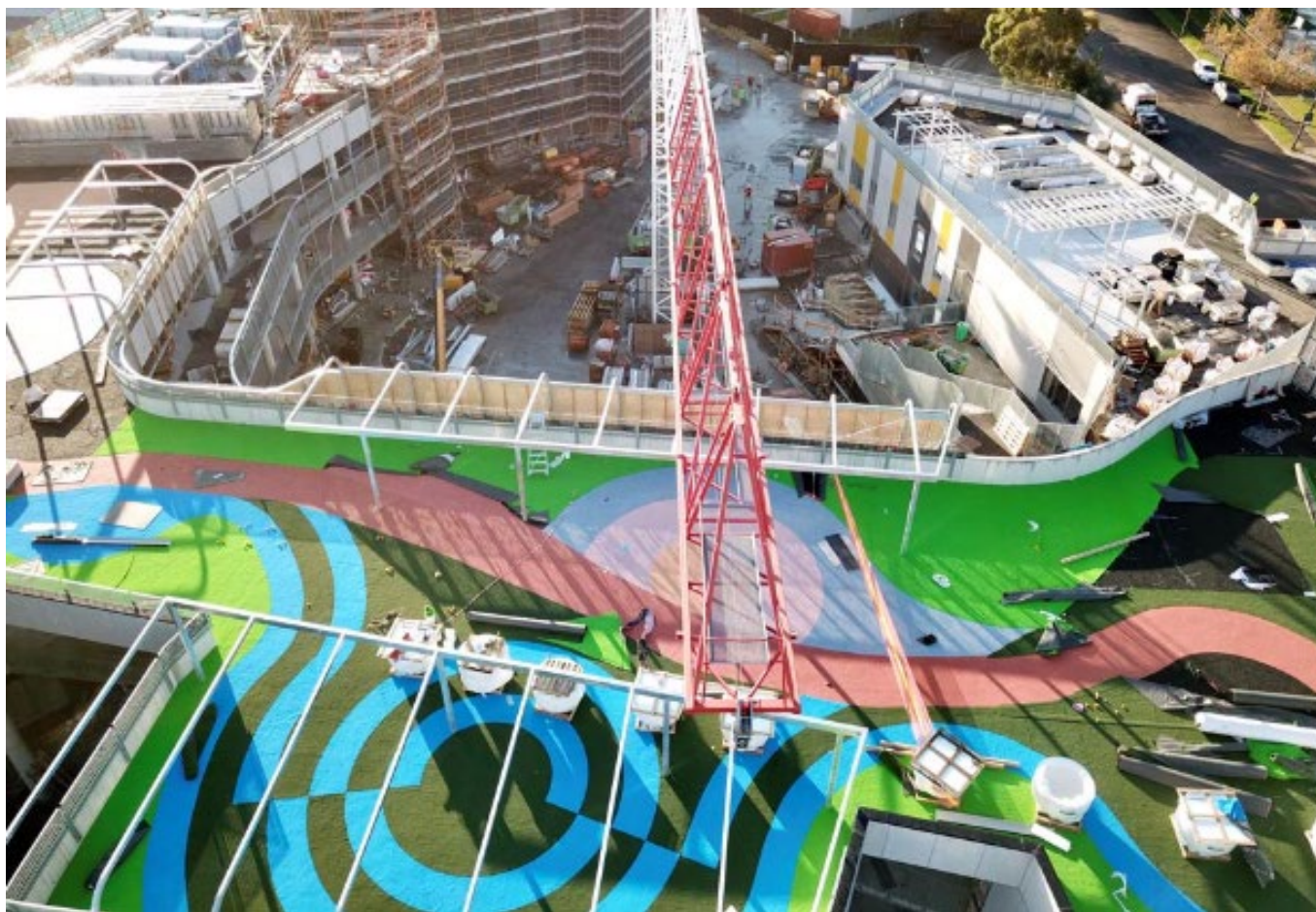


Figure 2 The colours of the Oraywa

The preparation for the school's transition has at its core the timely provisioning of a brand new, state of the art, fully functioning, modern learning environment. The physical relocation plan will occur largely after school hours once the construction company has been approved to release the site to the school

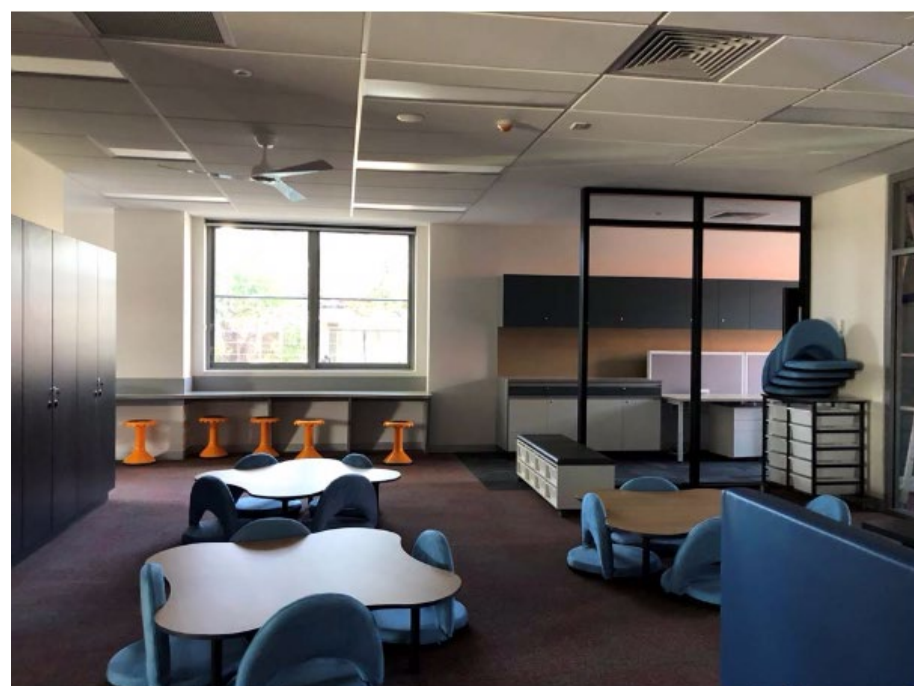


Figure 1 Newly furnished space

ready for occupation. As part of this enormous relocation process Schools' Infrastructure NSW has engaged the services of MoveCorp, a relocation and logistics consultancy, to work closely with the school. To this effect a detail series of audits have been conducted to identify storage requirements. In the last week or so a relocation management plan and a draft movement sequence has been developed through this consultation with the majority of the relocation occurring throughout the Spring Vacation period.



The students will be well accommodated in their new spaces. As many aspects of daily school life has been accounted for from undercover areas for bicycles, new Bistro for VET students Crua area for the canteen, a well-appointed Yakka Taka and purpose built area for the Maani to gather and grow our produce.

Figure 2 Primary Space

Camp Australia Spring holiday program

Camp Australia will not operate at APCS over spring holidays (25 September – 12 October) as the school will be moving into the new buildings ahead of Term 4. Camp Australia will provide further information on alternate locations for holiday care to the school and clients once they have been finalised.

Teacher Professional Learning – Innovative Learning Environments

Over the past 3 years, staff have been collaboratively developing their knowledge and skills to improve their practice to deliver innovative learning. This understanding of an Innovative Learning Environment as a holistic concept shifts the perception that learning takes place in a static classroom, using limited modes of delivery. It challenges the idea of the student as a passive participant being filled with content, and re-envisioned them as an actively engaged learner who has agency in their own learning. Most recently a group of teachers collaboratively completed an on line course “Innovative Learning Environments” to better understand the nature and value of such learning environments and develop a repertoire of teaching strategies that facilitate student learning in innovative learning environments.

